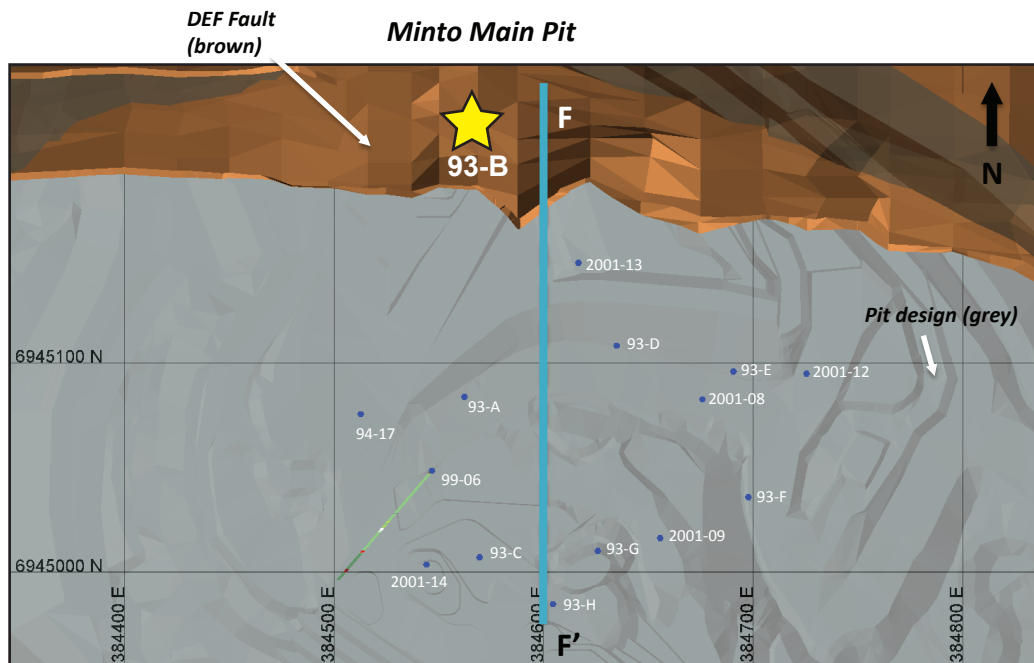


## Minto deposit (Yukon MINFILE 115I 021, 022)

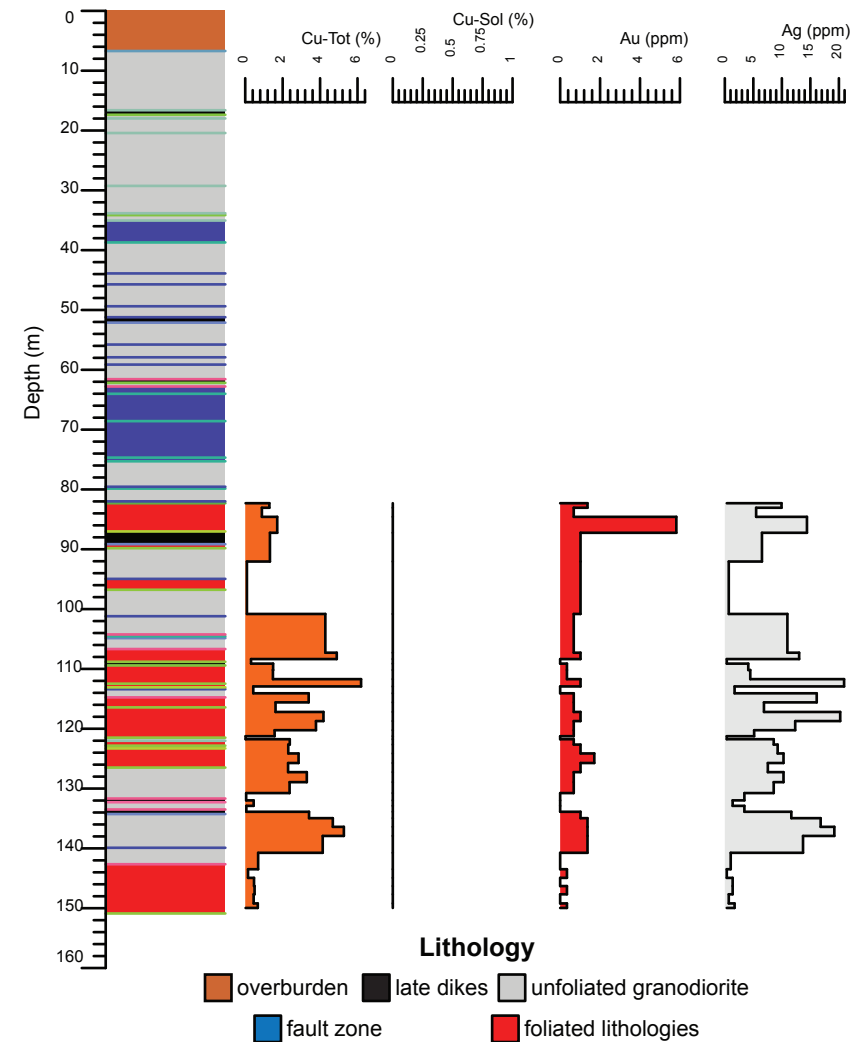
### Drill Hole: 93-B, Minto Main deposit

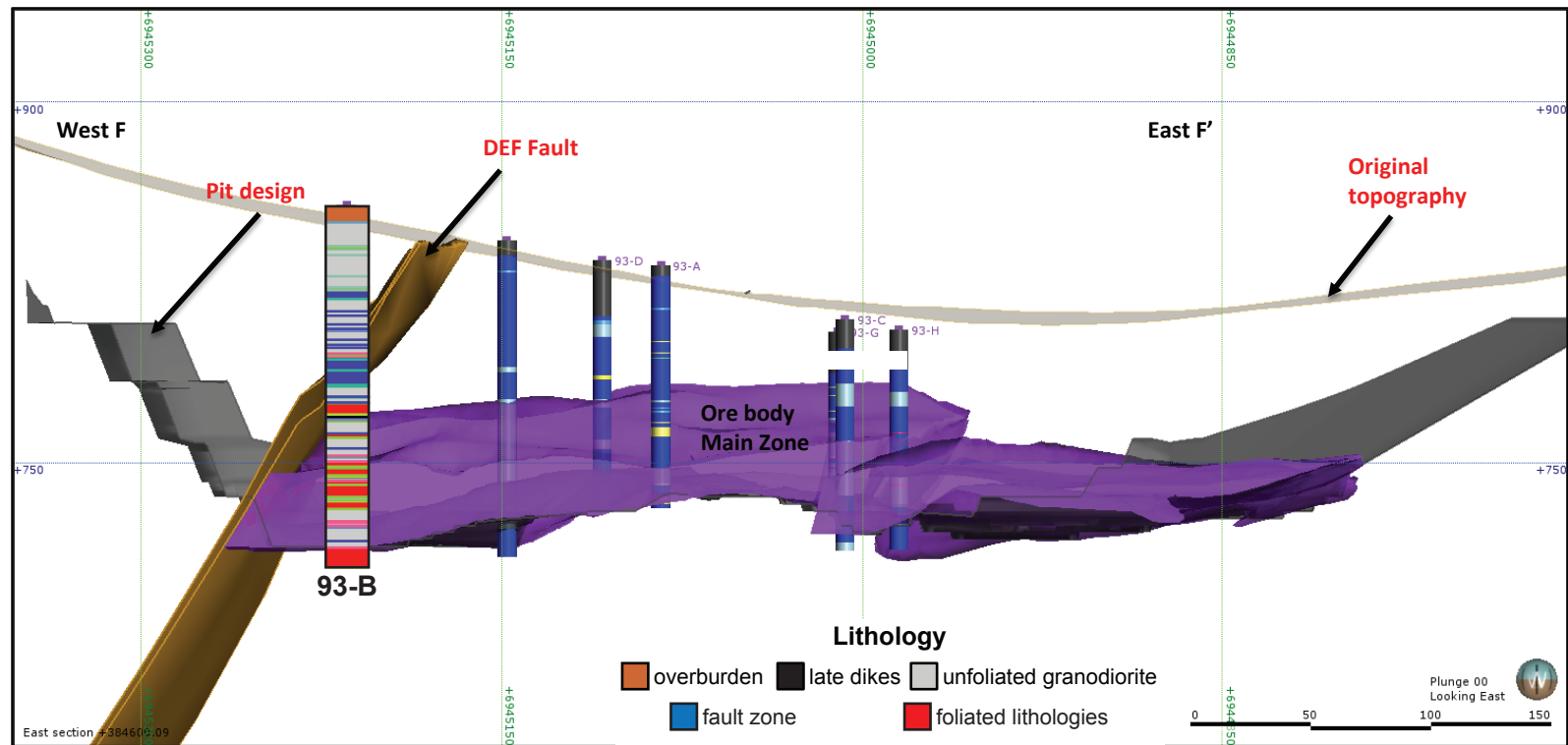
Area	Hole No.	Azimuth	Dip	Length (m)	Collar coordinates (NAD83, Zn 8)
Minto Main	93-B	0	-90	150.88	384568mE, 6945214mN



Above: Orthophoto of Minto area. Collar location of 93-B shown by yellow star, blue circles show collar locations of other drill holes in YGS collection.

Right: Simplified strip log with selected assays.





Above: Simplified vertical north-south cross-section through the Minto Main pit.

Right: Selected assays through Minto Main lower zone. Cu - Tot = sulphide and non-sulphide copper, Cu-Sol = non-sulphide copper

Hole	From (m)	To (m)	Interval (m)	Sample	Cu (%)	Cu-Sol (%)	Au (ppm)	Ag (ppm)
93-B	82.3	83.82	1.52	4999	1.3	0.0	1.4	9.9
93-B	83.82	85.34	1.52	5000	0.9	0.0	0.7	5.5
93-B	85.34	87.02	1.68	4551	1.7	0.0	5.8	14.4
93-B	89.15	89.82	0.67	4552	1.3	0.0	1.0	6.5
93-B	94.95	96.77	1.82	4553	0.1	0.0	1.0	0.7
93-B	106.68	107.9	1.22	2188	4.3	0.0	0.7	11.0
93-B	107.9	108.81	0.91	2189	4.9	0.0	1.0	13.0
93-B	108.81	109.42	0.61	2190	0.3	0.0	0.0	0.3
93-B	109.42	110.95	1.53	2191	1.5	0.0	0.3	4.1
93-B	110.95	112.47	1.52	2192	1.5	0.0	0.3	4.5
93-B	112.47	113.39	0.92	2193	6.2	0.0	1.0	20.9
93-B	113.39	114.76	1.37	2194	0.4	0.0	0.0	1.7